

LD233-F1

High Power Surface Mounted Adjustable Spotlight



Install sheet - Page 1

SPECIFICATION

LED recessed luminaires are class III for Safety Extra Low Voltage DC supply. The product should only be used with a supplied or LightGraphix approved 350mA, 500mA or 700mA constant current driver.

Suitable for mounting on normally flammable surfaces.

Lamp: **F1 LED Engine.**

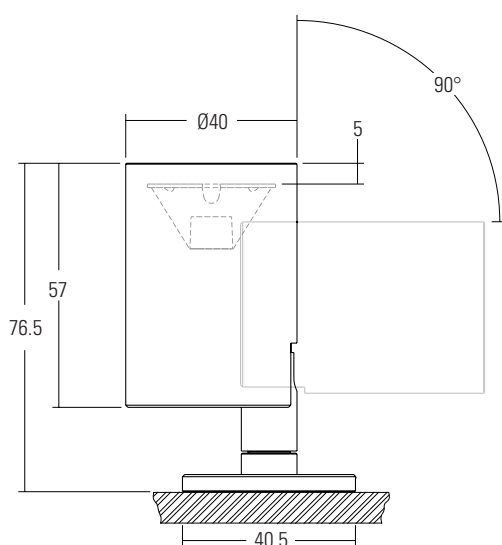
This fitting is **IP40** rated.

Lumen Maintenance: L90B5 at 90,000hrs.

LD233 - F1	
Product & LED Output Code	Power Output
LD233-F1 - 350	350mA 3.5W
LD233-F1 - 500	500mA 5W
LD233-F1 - 700	700mA 7W

DIAGRAM

/MP



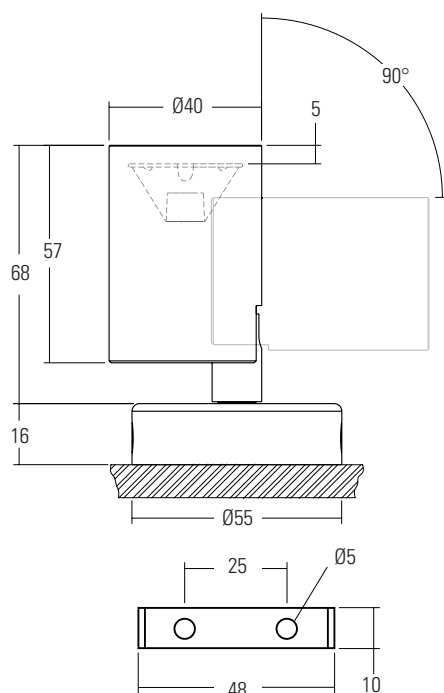
INSTALLATION

/MP - MOUNT PLATE

1. Check the cable exit prior to install. If the cable is being routed internally drill an Ø5mm hole. If the cable is being routed externally align the cable exit on the /MP to the desired position.
2. Fix fitting in correct location with 2x No.6 Screws.
3. Wire the luminaire to a specified driver ensuring the power is off.
4. Angle head/s to desired position.
5. Confirm installation was successful by powering up the fitting. If there is no light output, switch off power immediately and verify wiring.

DIAGRAM

/SMB



INSTALLATION

/SMB - SURFACE MOUNTED BASE

1. Fix /SMB Bracket to mounting surface.
2. Wire the luminaire to a specified driver ensuring the power is off.
3. Offer up the fitting and /SMB to the bracket and secure using the M4 x 8mm CSK head screws provided using a 2.5mm allen key.
4. Make desired adjustments to the fitting.
5. Confirm installation was successful by powering up the fitting. If there is no light output, switch off power immediately and verify wiring.

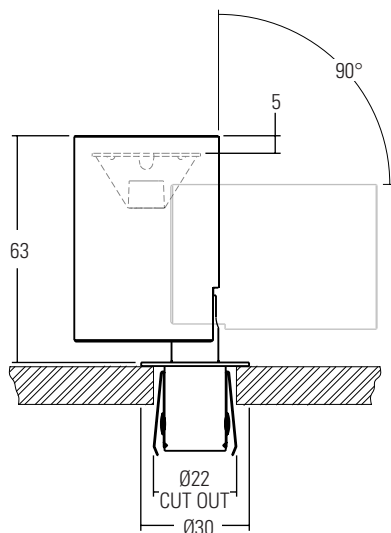
LD233-F1

High Power Surface Mounted Adjustable Spotlight

Install sheet - Page 2

DIAGRAM

/PL1



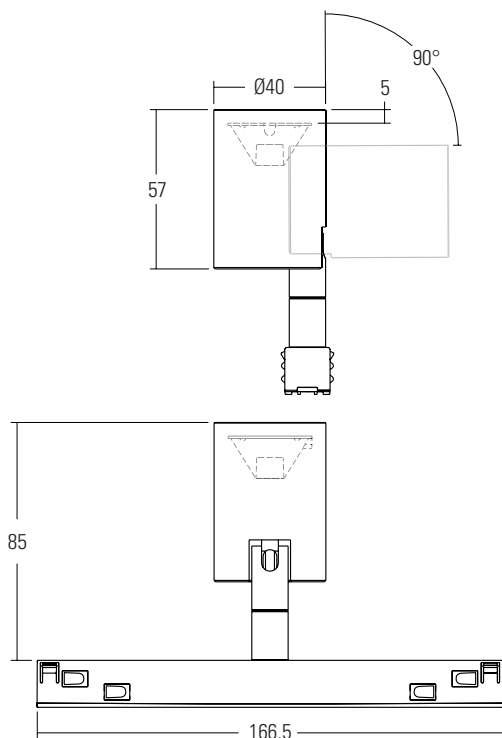
INSTALLATION

/PL1 - FIXING PLATE

1. Cut out a Ø22mm hole in the mounting surface.
2. Wire the luminaire to a specified driver ensuring the power is off.
3. Compress the spring clips and push luminaire into mounting surface.
4. Angle head to desired position.
5. Confirm installation was successful by powering up the fitting. If there is no light output, switch off power immediately and verify wiring.

DIAGRAM

/TA



INSTALLATION

/TA - TRACK ADAPTER

1. Ensure the power to the system is turned off prior to installation. NOTE: this adapter only works with the A.A.G Stucchi MULTISYSTEM EVO.
2. The /TA is a click in/click out system.
3. To insert simply offer up the unit to the track and press until the fitting clicks and sits flush.
4. In order to remove, again check the power is turned off. Place the fitting so it is parallel to the mounting surface and using a firm grip carefully pull to remove the fitting. DO NOT pull at an angle or twist the fitting during this process.
5. Confirm installation was successful by powering up the fitting. If there is no light output, switch off power immediately and verify wiring.

SEE CONSTANT CURRENT WIRING SHEET FOR IN SERIES WIRING DIAGRAM

WIRING

Do not power up until fitting is wired correctly! Constant current LEDs must be wired in series, polarity is critical. Please refer to specified driver sheet for details on the minimum and maximum number of LEDs per circuit.

IMPORTANT

Make sure that all cables and connections are securely connected before switching on the power. Do not switch on the power source prior to making these connections as this will result in the LEDs being overvolted, which can lead to failure of the LEDs and/or the driver. If the LEDs do not work upon power up, turn off the power source immediately and check the polarity of the wiring.

MAINTENANCE

CABLE: The external flexible cable shall only be replaced by the manufacturer if the cable is damaged.

LAMPS: The light source contained in this luminaire shall only be replaced by the manufacturer. Please clean with soft cloth and avoid harsh cleaning chemicals.

CORE COLOUR & POLARITY		
Colour of Cable	Red	Black
Materials	+	-